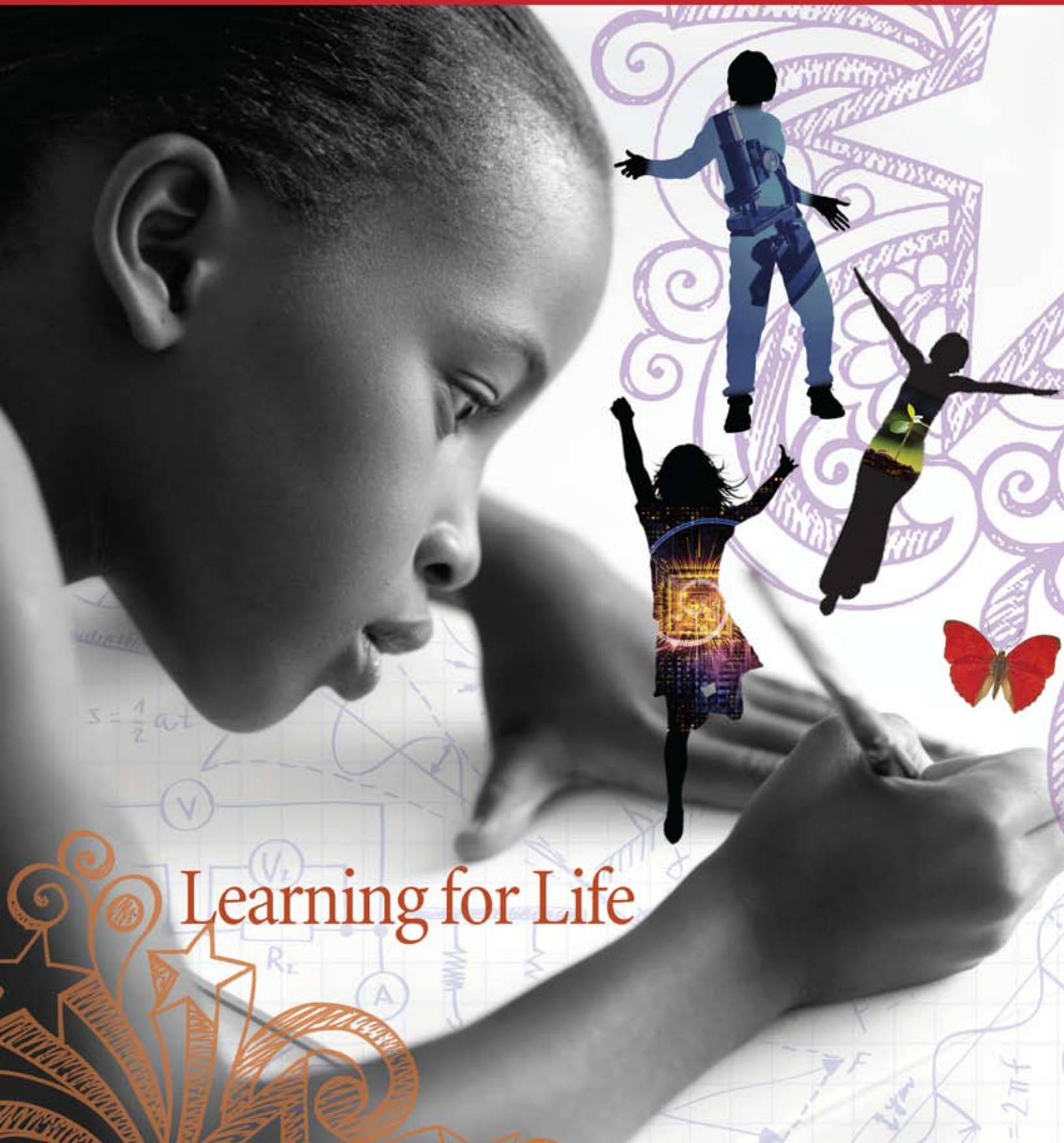


Student Code of Conduct



Learning for Life

Table of Contents

STUDENT CODE OF CONDUCT	1
Purpose.....	1
Notice of Nondiscrimination.....	1
School District Authority and Jurisdiction	2
Reporting Crimes	2
Revoking Transfers.....	2
Participating in Graduation Activities	2
Standards for Student Conduct	3
General Conduct Violations.....	3
Disregard for Authority.....	3
Mistreatment of Others	4
Property Offenses.....	4
Possession of Prohibited Items	4
Possession of Telecommunications or Other Electronic Devices.....	5
Illegal, Prescription, and Over-the-Counter Drugs	5
Misuse of Technology Resources and the Internet.....	5
Safety Transgressions	5
Miscellaneous Offenses	6
Discipline Management Techniques.....	6
Techniques	6
Notification	7
Appeals	7
Removal from the School Bus	7
Removal from the Regular Educational Setting	10
Routine Referral.....	10
Formal Removal.....	10
Returning Student to Classroom	10
Out-of-School Suspension	10
Misconduct.....	10
Process	11
Disciplinary Alternative Education Program (DAEP) Placement	11
Discretionary Placement: Misconduct That May Result in DAEP Placement.....	11
Misconduct Identified in State Law	11

Mandatory Placement: Misconduct That Requires DAEP Placement.....	12
Sexual Assault and Campus Assignments	12
Emergencies	13
Process	13
Conference	13
Placement Order.....	13
Coursework Notice	13
Length of Placement	13
Exceeds One Year.....	13
Exceeds School Year	14
Exceeds 60 Days.....	14
Appeals	14
Restrictions during Placement	14
Placement Review.....	14
Additional Misconduct.....	15
Notice of Criminal Proceedings.....	15
Withdrawal during Process	15
Newly Enrolled Students	15
Emergency Placement Procedure	16
Placement and/or Expulsion for Certain Offenses.....	16
Registered Sex Offenders	16
Review Committee.....	16
Newly Enrolled Student.....	16
Appeal	16
Certain Felonies	17
Hearing and Required Findings	17
Length of Placement	17
Newly Enrolled Students	17
Expulsion	17
Discretionary Expulsion: Misconduct That May Result in Expulsion	18
Any Location	18
At School, Within 300 Feet, or at a School Event	18
Within 300 Feet of School	18
Property of Another District	18

While in DAEP	19
Mandatory Expulsion: Misconduct That Requires Expulsion	19
Under Federal Law	19
Under the Texas Penal Code	19
Under Age Ten	20
Emergency	20
Process	20
Hearing	20
Board Review of Expulsion	20
Expulsion Order	21
Length of Expulsion	21
Withdrawal during Process	21
Additional Misconduct	21
Restrictions during Expulsion	21
Newly Enrolled Students	22
Emergency Expulsion Procedures	22
DAEP Placement of Expelled Students	22
Students with Disabilities	22
Glossary	24

STUDENT CODE OF CONDUCT

Purpose

The Student Code of Conduct (the “Code”) is the district’s response to the requirements of Chapter 37 of the Texas Education Code. The Code provides methods and options for managing students in the classroom and on school grounds, disciplining students, and preventing and intervening in student discipline problems.

The law requires the district to define misconduct that may—or must—result in a range of specific disciplinary consequences including removal from a regular classroom or campus, out-of-school suspension, placement in a disciplinary alternative education program (DAEP), or expulsion from school.

This Student Code of Conduct has been adopted by the Fort Bend Independent School District Board of Trustees and developed with the advice of the district-level committee. This Code provides information to parents and students regarding standards of conduct, consequences of misconduct, and procedures for administering discipline. It remains in effect during summer school and at all school-related events and activities outside of the school year until an updated version adopted by the Board becomes effective for the next school year.

In accordance with state law, the Code shall be posted at each school campus or shall be available for review at the office of the campus principal. Additionally, the Code of Conduct shall be posted on the District’s website. Parents shall be notified of any conduct violation that may result in a student being suspended, placed in a DAEP, or expelled.

Because the Student Code of Conduct is adopted by the district’s Board of Trustees, it has the force of policy; therefore, in case of conflict between the Code and the student handbook, the Code shall prevail.

Please Note: The discipline of students with disabilities who are eligible for services under federal law (Individuals with Disabilities Education Act and Section 504 of the Rehabilitation Act of 1973) is subject to the provisions of those laws.

Notice of Nondiscrimination

The Fort Bend Independent School District, as an equal opportunity educational provider, does not discriminate on the basis of race, color, religion, gender, sex, national origin, disability and/or age in educational programs or activities that it operates. The district is required by Title VI and Title VII of the Civil Rights Act of 1964, Title IX of the Education Amendments of 1072, Section 504 of the Rehabilitation Act of 1973, the Americans with Disabilities Act, and the Age Discrimination Act of 1975, as amended, as well as Board policy not to discriminate in such a manner. *(Not all prohibited bases apply to all programs.)*

If you suspect discrimination, please contact the Title IX Coordinator for concerns regarding discrimination on the basis of sex: Philip O’Neal, Director of Athletics, at 281-634-1000.

Contact the Section 504 Coordinator for concerns regarding discrimination on the basis of disability: Dr. Bob Conlon, Director of Student Support Services, at 281-634-1000.

For all other concerns regarding discrimination, please contact the Superintendent’s Office at 281-634-1000.

Each of the individuals listed above may be contacted through the Fort Bend Independent School District Administration Building at 16431 Lexington Blvd., Sugar Land, Texas 77479.

Please refer to Board Policy FFH for further clarification. General questions about the district should be directed to the Community Relations Department at 281-634-1000.

School District Authority and Jurisdiction

School rules and the authority of the district to administer discipline apply whenever the interest of the district is involved, on or off school grounds, in conjunction with or independent of classes and school-sponsored activities.

The district has disciplinary authority over a student:

1. During the regular school day and while the student is going to and from school or a school-sponsored or school-related activity on district transportation;
2. During lunch periods in which a student is allowed to leave campus;
3. While the student is in attendance at any school-related activity, regardless of time or location;
4. For any school-related misconduct, regardless of time or location;
5. When retaliation against a school employee or volunteer occurs or is threatened, regardless of time or location;
6. When criminal mischief is committed on or off school property or at a school-related event;
7. For certain offenses committed within 300 feet of school property as measured from any point on the school's real property boundary line;
8. For certain offenses committed while on school property or while attending a school-sponsored or school-related activity of another district in Texas;
9. When the student commits a felony, as provided by Education Code 37.006 or 37.0081; and
10. When the student is required to register as a sex offender.

The district has the right to search a vehicle driven to school by a student and parked on school property whenever there is reasonable cause to believe it contains articles or materials prohibited by the district.

Students' desks and lockers are school property and remain under the control and jurisdiction of the school even when assigned to an individual student.

Students are fully responsible for the security and contents of the assigned desks and lockers. Students must be certain that the locker is locked and that the combination is not available to others. Searches of desks or lockers may be conducted at any time if there is **reasonable cause** to believe that they contain articles or materials prohibited by district policy, whether or not a student is present. The parent will be notified if any prohibited items are found in the student's desk or locker.

Reporting Crimes

School administrators shall report crimes as required by law and shall call local law enforcement when an administrator suspects that a crime has been committed on campus.

Revoking Transfers

The district has the right to revoke the approved transfer of a student for committing any violation outlined in the district's Student Code of Conduct at any time that would result in In School Suspension (ISS), Out of School Suspension (OSS), or a DAEP. Transfers approved under PEG or AYP guidelines may not be revoked.

Participating in Graduation Activities

The district has the right to limit a student's participation in graduation activities for violating the district's Code.

If it is determined by the administration that any senior, during the final grading period, participates in an activity on school property or in connection with any school-sponsored activity that violates the Student Code of Conduct (including, but not limited to, "senior pranks"), in addition to being subject to disciplinary consequences, may, at the discretion of the superintendent or the superintendent's designee, be prohibited from participating in year-end

graduation ceremonies, including, but not limited to, commencement, prom, Pro Grad, and may be denied other senior privileges.

Notwithstanding the foregoing, if the senior is charged with a misdemeanor or felony violation of the Texas Penal Code for the aforementioned conduct, or the superintendent or the superintendent's designee has a reasonable belief that a criminal violation has occurred, the student, in addition to being subject to other disciplinary consequences specified in the Student Code of Conduct, shall be automatically disqualified from participating in graduation ceremonies, including commencement, prom, and Pro Grad.

Participation might include a speaking role, as established by district policy and procedures.

Students eligible to give the opening and closing remarks at graduation shall be notified by the campus principal. Notwithstanding any other eligibility requirements, in order to be considered as an eligible student to give the opening or closing remarks, a student shall not have engaged in any misconduct in violation of the district's Code resulting in removal to a DAEP or expulsion during the semester immediately preceding graduation.

The valedictorian and salutatorian may also have speaking roles at graduation. No student shall be eligible to have such a speaking role if he or she engaged in any misconduct in violation of the district's Code resulting in removal to a DAEP or expulsion during the semester immediately preceding graduation.

See **DAEP—Restrictions During Placement** on page 13, for information regarding a student assigned to DAEP at the time of graduation.

Standards for Student Conduct

Each student is expected to:

- Demonstrate courtesy, even when others do not.
- Behave in a responsible manner, always exercising self-discipline.

- Attend all classes, regularly and on time.
- Prepare for each class; take appropriate materials and assignments to class.
- Meet district and campus standards of grooming and dress.
- Obey all campus and classroom rules.
- Respect the rights and privileges of students, teachers, and other district staff and volunteers.
- Respect the property of others, including district property and facilities.
- Cooperate with and assist the school staff in maintaining safety, order, and discipline.
- Adhere to the requirements of the Student Code of Conduct.

General Conduct Violations

The following categories of conduct are prohibited at school, in vehicles owned or operated by the district, and at all school-related activities, but the list does not include the most severe offenses. In the subsequent sections on Out-of-School Suspension, DAEP Placement, Placement and/or Expulsion for Certain Offenses, and Expulsion, certain offenses that require or permit specific consequences are listed. Any offense, however, may be severe enough to result in Removal from the Regular Educational Setting as detailed in that section.

Disregard for Authority

Students shall not:

- Fail to comply with directives given by school personnel (insubordination).
- Leave school grounds or school-sponsored events without permission.
- Disobey rules for conduct on district vehicles.
- Refuse to accept discipline management techniques assigned by a teacher or principal.

Mistreatment of Others

Students shall not:

- Use profanity or vulgar language or make obscene gestures.
- Fight or scuffle. (For assault see DAEP Placement and Expulsion.)
- Threaten a district student, employee, or volunteer, on or off school property, if the conduct causes a substantial disruption to the educational environment.
- Engage in bullying, harassment, or making hit lists. (See glossary for all three terms.)
- Engage in conduct that constitutes sexual or gender-based harassment or sexual abuse, whether by word, gesture, or any other conduct, directed toward another person, including a district student, employee, or volunteer.
- Engage in conduct that constitutes dating violence. (See glossary.)
- Engage in inappropriate or indecent exposure of private body parts.
- Participate in hazing. (See glossary.)
- Cause an individual to act through the use of or threat of force (coercion).
- Commit extortion or blackmail (obtaining money or an object of value from an unwilling person).
- Engage in inappropriate verbal, physical, or sexual conduct directed toward another person, including a district student, employee, or volunteer.
- Record the voice or image of another without the prior consent of the individual(s) being recorded, or in any way that disrupts the educational environment or invades the privacy of others.

Property Offenses

Students shall not:

- Damage or vandalize property owned by others. (For felony criminal mischiefs see DAEP Placement or Expulsion.)
- Deface or damage school property—including textbooks, technology and electronic resources, lockers, furniture, and other equipment—with graffiti or by other means.
- Steal from students, staff, or the school.
- Commit or assist in a robbery or theft even if it does not constitute a felony according to the Texas Penal Code. (For felony robbery, aggravated robbery, and theft see DAEP Placement and Expulsion.)

Possession of Prohibited Items

Students shall not possess or use:

- Fireworks of any kind, smoke or stink bombs, or any other pyrotechnic device;
- A razor, box cutter, chain, or any other object used in a way that threatens or inflicts bodily injury to another person;
- A “look-alike” weapon;
- An air gun or BB gun;
- Ammunition;
- A stun gun;
- A pocketknife or any other small knife;
- Mace or pepper spray;
- Pornographic material;
- Tobacco products, including electronic cigarettes;
- Matches or a lighter;
- A laser pointer for other than an approved use; or
- Any articles not generally considered to be weapons, including school supplies, when the principal or designee determines that a danger exists. (For weapons and firearms see DAEP Placement and Expulsion.)

Possession of Telecommunications or Other Electronic Devices

Students shall not use a telecommunications device, including a cellular telephone, or other electronic device in violation of district or campus rules. Please refer to the District's Digital Citizenship information contained in the Student/Parent Handbook.

Illegal, Prescription, and Over-the-Counter Drugs

Students shall not:

- Possess or sell seeds or pieces of marijuana in less than a usable amount. (For illegal drugs, alcohol, and inhalants see DAEP Placement and Expulsion.)
- Possess, use, give, or sell paraphernalia related to any prohibited substance. (See glossary for "paraphernalia.")
- Possess or sell look-alike drugs or attempt to pass items off as drugs or contraband.
- Abuse the student's own prescription drug, give a prescription drug to another student, or possess or be under the influence of another person's prescription drug on school property or at a school-related event. (See glossary for "abuse.")
- Abuse over-the-counter drugs. (See glossary for "abuse.") Be under the influence of prescription or over-the-counter drugs that cause impairment of the physical or mental faculties. (See glossary for "under the influence.")
- Have or take prescription drugs or over-the-counter drugs at school other than as provided by district policy.

Misuse of Technology Resources and the Internet

Students shall not:

- Violate policies, rules, or agreements signed by the student or the student's parent regarding the use of technology resources.

- Attempt to access or circumvent passwords or other security-related information of the district, students, or employees or upload or create computer viruses, including off school property if the conduct causes a substantial disruption to the educational environment.
- Attempt to alter, destroy, or disable district technology resources, including but not limited to, computers and related equipment, district data, the data of others, or other networks connected to the district's system, including off school property, if the conduct causes a substantial disruption to the educational environment.
- Use the Internet or other electronic communications to threaten district students, employees, or volunteers, including off school property, if the conduct causes a substantial disruption to the educational environment.
- Send, post, or possess electronic messages that are abusive, obscene, sexually oriented, threatening, harassing, damaging to another's reputation, or illegal, including cyberbullying and "sexting," either on or off school property, if the conduct causes a substantial disruption to the educational environment.
- Use e-mail or Websites to engage in or encourage illegal behavior or threaten school safety, including off school property, if the conduct causes a substantial disruption to the educational environment.

Safety Transgressions

Students shall not:

- Possess published or electronic material that is designed to promote or encourage illegal behavior or that could threaten school safety.
- Engage in verbal or written exchanges that threaten the safety of another student, a school employee, or school property.
- Make false accusations or perpetrate hoaxes regarding school safety.

- Engage in any conduct that school officials might reasonably believe will substantially disrupt the school program or incite violence.
- Throw objects that can cause bodily injury or property damage.
- Discharge a fire extinguisher without valid cause.

Miscellaneous Offenses

Students shall not:

- Violate dress and grooming standards as communicated in the student handbook.
- Cheat or copy the work of another.
- Gamble.
- Falsify records, passes, or other school-related documents.
- Engage in actions or demonstrations that substantially disrupt or materially interfere with school activities.
- Repeatedly violate other communicated campus or classroom standards of conduct.

The district may impose campus or classroom rules in addition to those found in the Code. These rules may be posted in classrooms or given to the student and may or may not constitute violations of the Code.

Discipline Management Techniques

Discipline shall be designed to improve conduct and to encourage students to adhere to their responsibilities as members of the school community. Disciplinary action shall draw on the professional judgment of teachers and administrators and on a range of discipline management techniques. Discipline shall be correlated to the seriousness of the offense, the student's age and grade level, the frequency of misbehavior, the student's attitude, the effect of the misconduct on the school environment, and statutory requirements.

Because of these factors, discipline for a particular offense, including misconduct in a

district vehicle owned or operated by the district, unless otherwise specified by law, may bring into consideration varying techniques and responses.

Since the district's primary responsibility in transporting students in district vehicles is to do so as safely as possible, the operator of the vehicle must focus on driving and not have his or her attention distracted by student misbehavior. Therefore, when appropriate disciplinary management techniques fail to improve student behavior or when specific misconduct warrants immediate removal, the principal may restrict or revoke a student's transportation privileges, in accordance with law.

Techniques

The following discipline management techniques may be used—alone or in combination—for behavior prohibited by the Student Code of Conduct or by campus or classroom rules:

- Verbal or written correction.
- Cooling-off time or "time-out."
- Seating changes within the classroom or vehicles owned or operated by the district.
- Temporary confiscation of items that disrupt the educational process.
- Rewards or demerits.
- Behavioral contracts.
- Counseling by teachers, school counselors, or administrative personnel.
- Parent-teacher conferences.
- Grade reductions for cheating, plagiarism, and as otherwise permitted by policy.
- Detention, including outside regular school hours.
- Sending the student to the office or other assigned area, or to in-school suspension.
- Assignment of school duties such as cleaning or picking up litter.

- Withdrawal of privileges, such as participation in extracurricular activities, eligibility for seeking and holding honorary offices, or membership in school-sponsored clubs and organizations.
- Penalties identified in individual student organizations' extracurricular standards of behavior.
- Restriction or revocation of district transportation privileges.
- School-assessed and school-administered probation.
- Out-of-school suspension, as specified in the Out-of-School Suspension section of this Code.
- Placement in a DAEP, as specified in the DAEP section of this Code.
- Placement and/or expulsion in an alternative educational setting, as specified in the Placement and/or Expulsion for Certain Offenses section of this Code.
- Expulsion, as specified in the Expulsion section of this Code.
- Referral to an outside agency or legal authority for criminal prosecution in addition to disciplinary measures imposed by the district.
- Other strategies and consequences as determined by school officials.

Note: Corporal punishment is not permitted in the FBISD. See Policy FO (LOCAL).

Notification

The principal or appropriate administrator shall notify a student's parent by phone or in writing of any violation that may result in a detention outside of regular school hours, out-of-school suspension, placement in a DAEP, or expulsion. Where possible, notification will be made the same day, but no more than three (3) school days after the administrator becomes aware of the violation.

Appeals

Questions from parents regarding disciplinary measures should be addressed to the teacher or campus administration, as appropriate. Appeals or complaints regarding the use of specific discipline management techniques should be addressed in accordance with policy FNG(LOCAL). A copy of the policy may be obtained from the principal's office or the central administration office or through the district's website at <http://pol.tasb.org/Policy/Code/483?filter=FNG>.

Consequences shall **not** be deferred pending the outcome of a grievance.

Removal from the School Bus

A bus driver may refer a student to the principal's office to maintain effective discipline on the bus. The principal must employ additional discipline management techniques, as appropriate, which can include restricting or revoking a student's bus riding privileges.

Students are expected to assist District staff in ensuring that buses remain in good condition and that transportation is provided safely. When riding in District vehicles, students are held to behavioral standards established in this Code. Students must:

- Follow the Driver's directions at all times.
- Enter and leave the bus or vehicle in an orderly manner at the designated stop.
- Keep feet, books, band instrument cases and other objects out of the aisle.
- Not deface any buses, vehicles or their equipment.
- Not put head, hands, arms, or legs out of the window.
- Not hold any object out of the window or throw any objects in or out of the bus or vehicle.
- Observe all usual classroom rules.
- Be seated while the bus or vehicle is moving.

- Fasten seat belts when available on any vehicle.
- Wait for the driver's signal upon leaving the bus or vehicle and before crossing in front of the bus or vehicle.

When students ride in a District vehicle or passenger car, seat belts must be fastened at all times. Misconduct on buses, in District vehicles, or at bus stops, will be punished in accordance with the Code and the following Consequences Chart. Bus riding privileges may be suspended.

Examples of Infractions			
Level I	Level II	Level III	Level IV
<ul style="list-style-type: none"> • Standing up while bus is moving • Out of assigned seat • Loud voice • Not seated “on pockets” • Gum • Food • Getting on/off at the wrong stop 	<ul style="list-style-type: none"> • Throwing objects on the bus • Arguing/disrespectful towards the bus driver • Profanity • Inappropriate physical contact • Verbal altercation with another student • Persistent Tier I offenses 	<ul style="list-style-type: none"> • Profanity directed at the bus driver • Physical altercation: slapping, kicking, hitting, pushing • Throwing objects out of the bus • Throwing items at or near the bus driver • Vandalism to the bus • Any action that necessitates a delay in completing the route • Threats towards a student • Possession of a knife (less than 5.5 inches) • Bullying • Persistent Tier II offenses 	<ul style="list-style-type: none"> • PSUU of drugs, alcohol or tobacco • Assault of a student • Assault of the bus driver • Threats towards the bus driver • Possession of a knife (more than 5.5 inches) • Persistent Tier III offenses

Consequences

	Elementary Grades (Pre-K to 5)	Secondary Grades (6 to 12)
Level I	Driver documents and conferences with student	Driver documents and conferences with student
1st Referral Consequences		
	Elementary Grades (Pre-K to 5)	Secondary Grades (6 to 12)
Level II, 1st Offense	Discipline referral by Transportation to school administration and parent contact by school	Discipline referral by Transportation to school administration and parent contact by school
Level II, Additional Offenses	1 Day Bus Suspension	3 Day Bus Suspension
Level III	3 Day Bus Suspension	5 Day Bus Suspension
Level IV	5 Day Bus Suspension	10 Day Bus Suspension
Second and Third Referral Consequences		
	Elementary Grades (Pre-K to 5)	Secondary Grades (6 to 12)
Level II	3 Day Bus Suspension	5 Day Bus Suspension
Level III	5 Day Bus Suspension	10 Day Bus Suspension
Level IV	10 Day Bus Suspension	15 Day Bus Suspension

***Severe and repeated infractions may result in immediate and permanent bus removal.

Removal from the Regular Educational Setting

In addition to other discipline management techniques, misconduct may result in removal from the regular educational setting in the form of a routine referral or a formal removal.

Routine Referral

A routine referral occurs when a teacher sends a student to the principal's office as a discipline management technique. The principal may then employ additional techniques.

Formal Removal

A teacher or administrator **may** remove a student from class for a behavior that violates this Code to maintain effective discipline in the classroom. A teacher **may** also initiate a formal removal from class if:

1. The student's behavior has been documented by the teacher as repeatedly interfering with the teacher's ability to teach his or her class or with the student's classmates' ability to learn; or
2. The behavior is so unruly, disruptive, or abusive that the teacher cannot teach, and the students in the classroom cannot learn.

A teacher or administrator **must** remove a student from class if the student engages in behavior that under the Education Code requires or permits the student to be placed in a DAEP or expelled. When removing for those reasons, the procedures in the subsequent sections on DAEP or expulsion will be followed. Otherwise, within three school days of the formal removal, the appropriate administrator shall schedule a conference with the student's parent; the student; the teacher, in the case of removal by a teacher; and any other administrator.

At the conference, the appropriate administrator shall inform the student of the misconduct for which he or she is charged and the consequences. The administrator shall give the student an opportunity to share his or her version of the incident.

When a student is removed from the regular classroom by a teacher and a conference is pending, the principal may place the student in:

- Another appropriate classroom.
- In-school suspension.
- Out-of-school suspension.
- DAEP.

In accordance with federal law, the placement of a student with disabilities may be changed only by a duly constituted ARD Committee.

Returning Student to Classroom

When a student has been formally removed from class by a teacher for conduct against the teacher containing the elements of assault, aggravated assault, sexual assault, aggravated sexual assault, murder, capital murder, or criminal attempt to commit murder or capital murder, the student may not be returned to the teacher's class without the teacher's consent.

When a student has been formally removed by a teacher for any other conduct, the student may be returned to the teacher's class without the teacher's consent, if the placement review committee determines that the teacher's class is the best or only alternative available.

Out-of-School Suspension

Misconduct

Students may be suspended for any behavior listed in the Code as a general conduct violation (previously listed and beginning at page 3), DAEP offense, or expellable offense.

In deciding whether to order out-of-school suspension, the district shall take into consideration:

1. Self-defense (see glossary),
2. Intent or lack of intent at the time the student engaged in the conduct,
3. The student's disciplinary history, and
4. Whether the student has a disability that substantially impairs the student's capacity

to appreciate the wrongfulness of the conduct.

Process

State law allows a student to be suspended for no more than three school days per behavior violation, with no limit on the number of times a student may be suspended in a semester or school year.

Before being suspended a student shall have an informal conference with the appropriate administrator, who shall advise the student of the conduct of which he or she is accused. The student shall be given the opportunity to explain his or her version of the incident before the administrator's decision is made.

The number of days of a student's suspension shall be determined by the appropriate administrator, but shall not exceed three school days.

The appropriate administrator shall determine any restrictions on participation in school-sponsored or school-related extracurricular and cocurricular activities.

Disciplinary Alternative Education Program (DAEP) Placement

The DAEP shall be provided in a setting other than the student's regular classroom. An elementary school student may not be placed in a DAEP with a student who is not an elementary school student.

For purposes of DAEP, elementary classification shall be kindergarten–grade 5, and secondary classification shall be grades 6–12.

Summer programs provided by the district shall serve students assigned to a DAEP separately from those students who are not assigned to the program.

A student who is expelled for an offense that otherwise would have resulted in a DAEP placement does not have to be placed in a DAEP in addition to the expulsion.

In deciding whether to place a student in a DAEP, regardless of whether the action is mandatory or discretionary, the district shall take into consideration:

1. Self-defense (see glossary),
2. Intent or lack of intent at the time the student engaged in the conduct,
3. The student's disciplinary history, and
4. Whether the student has a disability that substantially impairs the student's capacity to appreciate the wrongfulness of the conduct.

Discretionary Placement: Misconduct That May Result in DAEP Placement

A student **may** be placed in a DAEP for behaviors prohibited in the General Conduct Violations section of this Code. Such behaviors are considered level 3.

Misconduct Identified in State Law

In accordance with state law, a student **may** be placed in a DAEP for any one of the following offenses:

- Involvement in a public school fraternity, sorority, or secret society, including participating as a member or pledge, or soliciting another person to become a pledge or member of a public school fraternity, sorority, secret society, or gang. (See glossary.)
- Involvement in criminal street gang activity. (See glossary.)
- Criminal mischief, not punishable as a felony.
- Assault (no bodily injury) with threat of imminent bodily injury.
- Assault by offensive or provocative physical contact.

In accordance with state law, a student **may** be placed in a DAEP if the superintendent or the superintendent's designee has reasonable belief (see glossary) that the student has engaged in

conduct punishable as a felony, other than aggravated robbery or those listed as offenses involving injury to a person in Title 5 (see glossary) of the Texas Penal Code, that occurs off school property and not at a school-sponsored or school-related event, if the student's presence in the regular classroom threatens the safety of other students or teachers or will be detrimental to the educational process.

The appropriate administrator **may**, but is not required to, place a student in a DAEP for off-campus conduct for which DAEP placement is required by state law if the administrator does not have knowledge of the conduct before the first anniversary of the date the conduct occurred.

Mandatory Placement: Misconduct That Requires DAEP Placement

A student **must** be placed in a DAEP if the student:

- Engages in conduct relating to a false alarm or report (including a bomb threat) or a terroristic threat involving a public school. (See glossary.)
- Commits the following offenses on school property or within 300 feet of school property as measured from any point on the school's real property boundary line, or while attending a school-sponsored or school-related activity on or off school property:
 - Engages in conduct punishable as a felony.
 - Commits an assault (see glossary) under Texas Penal Code 22.01(a)(1).
 - Sells, gives, or delivers to another person, or possesses, uses, or is under the influence of marijuana, a controlled substance, or a dangerous drug in an amount not constituting a felony offense. (School-related felony drug offenses are addressed in the Expulsion section.) (See glossary for "under the influence.")

- Sells, gives, or delivers to another person an alcoholic beverage; commits a serious act or offense while under the influence of alcohol; or possesses, uses, or is under the influence of alcohol, if the conduct is not punishable as a felony offense. (School-related felony alcohol offenses are addressed in the Expulsion section.)
- Behaves in a manner that contains the elements of an offense relating to abusable volatile chemicals.
- Behaves in a manner that contains the elements of the offense of public lewdness or indecent exposure.
- Engages in expellable conduct and is between six and nine years of age.
- Commits a federal firearms violation and is younger than six years of age.
- Engages in conduct that contains the elements of the offense of retaliation against any school employee or volunteer on or off school property. (Committing retaliation in combination with another expellable offense is addressed in the Expulsion section of this Code.)
- Engages in conduct punishable as aggravated robbery or a felony listed under Title 5 (see glossary) of the Texas Penal Code when the conduct occurs off school property and not at a school-sponsored or school-related event and:
 1. The student receives deferred prosecution (see glossary),
 2. A court or jury finds that the student has engaged in delinquent conduct (see glossary), or
 3. The superintendent or designee has a reasonable belief (see glossary) that the student engaged in the conduct.

Sexual Assault and Campus Assignments

If a student has been convicted of continuous sexual abuse of a young child or children or

convicted of or placed on deferred adjudication for sexual assault or aggravated sexual assault against another student on the same campus, and if the victim's parent or another person with the authority to act on behalf of the victim requests that the Board transfer the offending student to another campus, the offending student shall be transferred to another campus in the district. If there is no other campus in the district serving the grade level of the offending student, the offending student shall be transferred to a DAEP.

Emergencies

In an emergency, the principal or the principal's designee may order the immediate placement of a student in a DAEP for any reason for which placement in a DAEP may be made on a non-emergency basis.

Process

Removals to a DAEP shall be made by the Campus Principal or Executive Director of Student Affairs.

Conference

When a student is removed from class for a DAEP offense, the appropriate administrator shall schedule a conference within three school days with the student's parent, the student, and the teacher, in the case of a teacher removal.

At the conference, the appropriate administrator shall inform the student, orally or in writing, of the reasons for the removal and shall give the student an explanation of the basis for the removal and an opportunity to respond to the reasons for the removal.

Following valid attempts to require attendance, the district may hold the conference and make a placement decision regardless of whether the student or the student's parents attend the conference.

Placement Order

After the conference, if the student is placed in the DAEP, the appropriate administrator shall write a placement order. A copy of the DAEP

placement order shall be sent to the student and the student's parent.

Not later than the second business day after the conference, the Board's designee shall deliver to the juvenile court a copy of the placement order and all information required by Section 52.04 of the Family Code.

If the student is placed in the DAEP and the length of placement is inconsistent with the guidelines included in this Code, the placement order shall give notice of the inconsistency.

Coursework Notice

The parent or guardian of a student placed in DAEP shall be given written notice of the student's opportunity to complete a foundation curriculum course in which the student was enrolled at the time of removal and which is required for graduation, at no cost to the student. The notice shall include information regarding all methods available for completing the coursework.

Length of Placement

The duration of a student's placement in a DAEP shall be determined by the Campus Principal or Executive Director of Student Affairs.

The duration of a student's placement shall be determined on a case-by-case basis. DAEP placement shall be correlated to the seriousness of the offense, the student's age and grade level, the frequency of misconduct, the student's attitude, and statutory requirements.

The maximum period of DAEP placement shall be one calendar year except as provided below.

The district shall administer the required pre- and post-assessments for students assigned to DAEP for a period of 90 days or longer in accordance with established district administrative procedures for administering other diagnostic or benchmark assessments.

Exceeds One Year

Placement in a DAEP may exceed one year when a review by the district determines that:

1. The student is a threat to the safety of other students or to district employees, or
2. Extended placement is in the best interest of the student.

The statutory limitations on the length of a DAEP placement do not apply to a placement resulting from the Board's decision to place a student who engaged in the sexual assault of another student so that the students are not assigned to the same campus.

Exceeds School Year

Students who commit offenses requiring placement in a DAEP at the end of one school year may be required to continue that placement at the start of the next school year to complete the assigned term of placement.

For placement in a DAEP to extend beyond the end of the school year, the campus principal must determine that:

1. The student's presence in the regular classroom or campus presents a danger of physical harm to the student or others, or
2. The student has engaged in serious or persistent misbehavior (see glossary) that violates the district's Code.

Exceeds 60 Days

For placement in a DAEP to extend beyond 60 days or the end of the next grading period, whichever is sooner, a student's parent shall be given notice and the opportunity to participate in a proceeding before the Board or the Board's designee.

Appeals

Questions from parents regarding disciplinary measures should be addressed to the campus administration.

Appeals regarding the decision to place a student in a DAEP should be addressed to the Executive Director of Student Affairs in accordance with policy FOC(LEGAL). **Please Note:** The term of a disciplinary action may not be appealed if the term is for 60 school days or less or if the term

does not extend to the end of the next grading period. (Consult your campus administrator or the Executive Director of Student Affairs for additional information).

Student or parent appeals regarding the process used for the placement decision, such as issues related to the administrator's handling of the conference or proper notice being provided, should be addressed in accordance with policy FNG(LOCAL). A copy of the policy may be obtained from the principal's office or the central administration office or through the district's website at

www.fortbendisd.com/Governance or at <http://pol.tasb.org/Policy/Code/483?filter=FNG>.

Disciplinary consequences shall not be deferred pending the outcome of an appeal. Further, the decision to place a student in a DAEP cannot be appealed beyond the Board.

Restrictions during Placement

The district does not permit a student who is placed in a DAEP to participate in any school-sponsored or school-related extracurricular or cocurricular activity, including seeking or holding honorary positions and/or membership in school-sponsored clubs and organizations.

A student placed in a DAEP shall not be provided transportation unless he or she is a student with a disability who has transportation designated as a related service in the student's IEP.

For seniors who are eligible to graduate and are assigned to a DAEP at the time of graduation, the last day of placement in the program shall be the last instructional day, and the student shall be allowed to participate in the graduation ceremony and related graduation activities unless otherwise specified in the DAEP placement order.

Placement Review

A student placed in a DAEP shall be provided a review of his or her status, including academic status, by the alternative campus administrator or counselor (i.e. M.R. Wood Center for Learning or Ferndale Henry Center for

Learning) at intervals not to exceed 120 days. In the case of a high school student, the student's progress toward graduation and the student's graduation plan shall also be reviewed. At the review, the student or the student's parent shall be given the opportunity to present arguments for the student's return to the regular classroom or campus. The student may not be returned to the classroom of a teacher who removed the student without that teacher's consent.

Additional Misconduct

If during the term of placement in a DAEP the student engages in additional misconduct for which placement in a DAEP or expulsion is required or permitted, additional proceedings may be conducted, and the appropriate administrator may enter an additional disciplinary order as a result of those proceedings.

Notice of Criminal Proceedings

The office of the prosecuting attorney shall notify the district if a student was placed in a DAEP for certain offenses including any felony, unlawful restraint, indecent exposure, assault, deadly conduct, terroristic threats, organized crime, certain drug offenses, or possession of a weapon, and:

1. Prosecution of a student's case was refused for lack of prosecutorial merit or insufficient evidence and no formal proceedings, deferred adjudication (see glossary), or deferred prosecution will be initiated; or
2. The court or jury found a student not guilty, or made a finding that the student did not engage in delinquent conduct or conduct indicating a need for supervision, and the case was dismissed with prejudice.

If a student was placed in a DAEP for such conduct, on receiving the notice from the prosecutor, the superintendent or designee shall review the student's placement and schedule a review with the student's parent not later than the third day after the superintendent or designee receives notice from the prosecutor. The student may not be returned to the regular classroom pending the review.

After reviewing the notice and receiving information from the student's parent, the superintendent or designee may continue the student's placement if there is reason to believe that the presence of the student in the regular classroom threatens the safety of other students or teachers.

The student or the student's parent may appeal the superintendent's decision to the Board. The student may not be returned to the regular classroom pending the appeal. In the case of an appeal, the Board shall, at the next scheduled meeting, review the notice from the prosecutor and receive information from the student, the student's parent, and the superintendent or designee, and confirm or reverse the decision of the superintendent or designee. The Board shall make a record of the proceedings.

If the Board confirms the decision of the superintendent or designee, the student and the student's parent may appeal to the Commissioner of Education. The student may not be returned to the regular classroom pending the appeal.

Withdrawal during Process

When a student violates the district's Code in a way that requires or permits the student to be placed in a DAEP and the student withdraws from the district before a placement order is completed, the district may complete the proceedings and issue a placement order. If the student then reenrolls in the district during the same or a subsequent school year, the district may enforce the order at that time, less any period of the placement that has been served by the student during enrollment in another district. If the appropriate administrator or the Board fails to issue a placement order after the student withdraws, the next district in which the student enrolls may complete the proceedings and issue a placement order.

Newly Enrolled Students

The district shall continue the DAEP placement of a student who enrolls in the district and was assigned to a DAEP in an open-enrollment charter school or another district.

A newly enrolled student with a DAEP placement from a district in another state shall be placed as any other newly enrolled student if the behavior committed is a reason for DAEP placement in the receiving district.

If the student was placed in a DAEP by a school district in another state for a period that exceeds one year, this district, by state law, shall reduce the period of the placement so that the total placement does not exceed one year. After a review, however, the placement may be extended beyond a year if the district determines that the student is a threat to the safety of other students or employees, or the extended placement is in the best interest of the student.

Emergency Placement Procedure

When an emergency placement occurs, the student shall be given oral notice of the reason for the action. Not later than the tenth day after the date of the placement, the student shall be given the appropriate conference required for assignment to a DAEP.

Placement and/or Expulsion for Certain Offenses

This section includes two categories of offenses for which the Education Code provides unique procedures and specific consequences.

Registered Sex Offenders

Upon receiving notification in accordance with state law that a student is currently required to register as a sex offender, the administration must remove the student from the regular classroom and determine appropriate placement unless the court orders JJAEP placement.

If the student is under any form of court supervision, including probation, community supervision, or parole, the placement shall be in either DAEP or JJAEP for at least one semester.

If the student is not under any form of court supervision, the placement may be in DAEP or JJAEP for one semester or the placement may be

in a regular classroom. The placement may not be in the regular classroom if the Board or its designee determines that the student's presence:

1. Threatens the safety of other students or teachers,
2. Will be detrimental to the educational process, or
3. Is not in the best interests of the district's students.

Review Committee

At the end of the first semester of a student's placement in an alternative educational setting and before the beginning of each school year for which the student remains in an alternative placement, the district shall convene a committee, in accordance with state law, to review the student's placement. The committee shall recommend whether the student should return to the regular classroom or remain in the placement. Absent a special finding, the Board or its designee must follow the committee's recommendation.

The placement review of a student with a disability who receives special education services must be made by the ARD committee.

Newly Enrolled Student

If a student enrolls in the district during a mandatory placement as a registered sex offender, the district may count any time already spent by the student in a placement or may require an additional semester in an alternative placement without conducting a review of the placement.

Appeal

A student or the student's parent may appeal the placement by requesting a conference between the Board or its designee, the student, and the student's parent. The conference is limited to the factual question of whether the student is required to register as a sex offender. Any decision of the Board or its designee under this section is final and may not be appealed.

Certain Felonies

Regardless of whether placement or expulsion is required or permitted by one of the reasons in the DAEP Placement or Expulsion sections, in accordance with Education Code 37.0081, a student **may** be expelled and placed in either DAEP or JJAEP if the Board or its designee makes certain findings and the following circumstances exist in relation to aggravated robbery or a felony offense under Title 5 (see glossary) of the Texas Penal Code. The student must:

- Have received deferred prosecution for conduct defined as aggravated robbery or a Title 5 felony offense;
- Have been found by a court or jury to have engaged in delinquent conduct for conduct defined as aggravated robbery or a Title 5 felony offense;
- Have been charged with engaging in conduct defined as aggravated robbery or a Title 5 felony offense;
- Have been referred to a juvenile court for allegedly engaging in delinquent conduct for conduct defined as aggravated robbery or a Title 5 felony offense; or
- Have received probation or deferred adjudication or have been arrested for, charged with, or convicted of aggravated robbery or a Title 5 felony offense.

The district may expel the student and order placement under these circumstances regardless of:

1. The date on which the student's conduct occurred,
2. The location at which the conduct occurred,
3. Whether the conduct occurred while the student was enrolled in the district, or
4. Whether the student has successfully completed any court disposition requirements imposed in connection with the conduct.

Hearing and Required Findings

The student must first have a hearing before the Board or its designee, who must determine that in addition to the circumstances above that allow for the expulsion, the student's presence in the regular classroom:

1. Threatens the safety of other students or teachers,
2. Will be detrimental to the educational process, or
3. Is not in the best interest of the district's students.

Any decision of the Board or the Board's designee under this section is final and may not be appealed.

Length of Placement

The student is subject to the placement until:

1. The student graduates from high school,
2. The charges are dismissed or reduced to a misdemeanor offense, or
3. The student completes the term of the placement or is assigned to another program.

Newly Enrolled Students

A student who enrolls in the district before completing a placement under this section from another school district must complete the term of the placement.

Expulsion

In deciding whether to order expulsion, regardless of whether the action is mandatory or discretionary, the district shall take into consideration:

1. Self-defense (see glossary),
2. Intent or lack of intent at the time the student engaged in the conduct, and
3. The student's disciplinary history.

Discretionary Expulsion: Misconduct That May Result in Expulsion

Any Location

A student **may** be expelled for:

- Engaging in the following, no matter where it takes place:
 - Conduct that contains the elements of assault under Penal Code 22.01(a)(1) in retaliation against a school employee or volunteer.
 - Criminal mischief, if punishable as a felony.
- Engaging in conduct that contains the elements of one of the following offenses against another student, without regard to where the conduct occurs:
 - Aggravated assault.
 - Sexual assault.
 - Aggravated sexual assault.
 - Murder.
 - Capital murder.
 - Criminal attempt to commit murder or capital murder.
 - Aggravated robbery.
- Breach of computer security.
- Engaging in conduct relating to a false alarm or report (including a bomb threat) or a terroristic threat involving a public school.

At School, Within 300 Feet, or at a School Event

A student **may** be expelled for committing any of the following offenses on or within 300 feet of school property, as measured from any point on the school's real property boundary line, or while attending a school-sponsored or school-related activity on or off school property:

- Selling, giving, or delivering to another person, or possessing, using, or being under the influence of marijuana, a controlled

substance, or a dangerous drug, if the conduct is not punishable as a felony. (See glossary for "under the influence.")

- Selling, giving, or delivering to another person, or possessing, using, or being under the influence of alcohol; or committing a serious act or offense while under the influence of alcohol, if the conduct is not punishable as a felony.
- Engaging in conduct that contains the elements of an offense relating to abusable volatile chemicals.
- Engaging in conduct that contains the elements of assault under Section 22.01(a)(1) against an employee or a volunteer.
- Engaging in deadly conduct. (See glossary.)

Within 300 Feet of School

A student **may** be expelled for engaging in the following conduct while within 300 feet of school property, as measured from any point on the school's real property boundary line:

- Aggravated assault, sexual assault, or aggravated sexual assault.
- Arson. (See glossary.)
- Murder, capital murder, or criminal attempt to commit murder or capital murder.
- Indecency with a child, aggravated kidnapping, manslaughter, criminally negligent homicide, or aggravated robbery.
- Continuous sexual abuse of a young child or children.
- Felony drug- or alcohol-related offense.
- Use, exhibition, or possession of a firearm (as defined by state law), an illegal knife, a club, or prohibited weapon, or possession of a firearm (as defined by federal law).

Property of Another District

A student **may** be expelled for committing any offense that is a state-mandated expellable offense if the offense is committed on the property of another district in Texas or while the

student is attending a school-sponsored or school-related activity of a school in another district in Texas.

While in DAEP

A student **may** be expelled for engaging in documented serious misbehavior that violates the district's Code, despite documented behavioral interventions while placed in a DAEP. For purposes of discretionary expulsion from a DAEP, serious misbehavior means:

1. Deliberate violent behavior that poses a direct threat to the health or safety of others;
2. Extortion, meaning the gaining of money or other property by force or threat;
3. Conduct that constitutes coercion, as defined by Section 1.07, Penal Code; or
4. Conduct that constitutes the offense of:
 - a. Public lewdness under Section 21.07, Penal Code;
 - b. Indecent exposure under Section 21.08, Penal Code;
 - c. Criminal mischief under Section 28.03, Penal Code;
 - d. Personal hazing under Section 37.152; or
 - e. Harassment under Section 42.07(a)(1), Penal Code, of a student or district employee.

Mandatory Expulsion: Misconduct That Requires Expulsion

A student must be expelled under federal or state law for any of the following offenses that occur on school property or while attending a school-sponsored or school-related activity on or off school property:

Under Federal Law

- Bringing to school a firearm, as defined by federal law. "Firearm" under federal law includes:

- Any weapon (including a starter gun) that will, is designed to, or may readily be converted to expel a projectile by the action of an explosive.
- The frame or receiver of any such weapon.
- Any firearm muffler or firearm weapon.
- Any destructive device, such as any explosive, incendiary or poison gas bomb, or grenade.

Under the Texas Penal Code

- Using, exhibiting, or possessing the following, as defined by the Texas Penal Code:
 - A firearm (any device designed, made, or adapted to expel a projectile through a barrel by using the energy generated by an explosion or burning substance or any device readily convertible to that use), unless the use, exhibition, or possession of the firearm occurs at an off-campus approved target range facility while participating in or preparing for a school-sponsored shooting sports competition or a shooting sports educational activity that is sponsored or supported by the Parks and Wildlife Department or a shooting sports sanctioning organization working with the department.
 - An illegal knife, such as a knife with a blade over 5½ inches; hand instrument, designed to cut or stab another by being thrown; dagger, including but not limited to a dirk, stiletto, and poniard; bowie knife; sword; or spear.
 - A club (see glossary) such as an instrument specially designed, made, or adapted for the purpose of inflicting serious bodily injury or death by striking a person with the instrument, including a blackjack, nightstick, mace, and tomahawk.
 - A prohibited weapon, such as an explosive weapon, a machine gun, a short-barrel firearm, a firearm silencer,

knuckles, armor-piercing ammunition, a chemical dispensing device, a zip gun, or a tire deflation device. (See glossary.)

- Behaving in a manner that contains elements of the following offenses under the Texas Penal Code:
 - Aggravated assault, sexual assault, or aggravated sexual assault.
 - Arson. (See glossary.)
 - Murder, capital murder, or criminal attempt to commit murder or capital murder.
 - Indecency with a child.
 - Aggravated kidnapping.
 - Aggravated robbery.
 - Manslaughter.
 - Criminally negligent homicide.
 - Continuous sexual abuse of a young child or children.
 - Behavior punishable as a felony that involves selling, giving, or delivering to another person, or possessing, using, or being under the influence of marijuana, a controlled substance, a dangerous drug, or alcohol; or committing a serious act or offense while under the influence of alcohol.
- Engaging in retaliation against a school employee or volunteer combined with one of the above-listed mandatory expulsion offenses.

Under Age Ten

When a student under the age of ten engages in behavior that is expellable behavior, the student shall not be expelled, but shall be placed in a DAEP. A student under age six shall not be placed in a DAEP unless the student commits a federal firearm offense.

Emergency

In an emergency, the principal or the principal's designee **may** order the immediate expulsion of

a student for any reason for which expulsion may be made on a nonemergency basis.

Process

If a student is believed to have committed an expellable offense, the principal or other appropriate administrator shall schedule a hearing within a reasonable time. The student's parent shall be invited in writing to attend the hearing.

Until a hearing can be held, the principal may place the student in:

- Another appropriate classroom.
- In-school suspension.
- Out-of-school suspension.
- DAEP.

Hearing

A student facing expulsion shall be given a hearing with appropriate due process. The student is entitled to:

1. Representation by the student's parent or another adult who can provide guidance to the student and who is not an employee of the district,
2. An opportunity to testify and to present evidence and witnesses in the student's defense, and
3. An opportunity to question the witnesses called by the district at the hearing.

After providing notice to the student and parent of the hearing, the district may hold the hearing regardless of whether the student or the student's parent attends.

The Board of Trustees delegates to the Executive Director of Student Affairs or designee the authority to conduct hearings and expel students.

Board Review of Expulsion

After the due process hearing, the expelled student may request that the Board review the expulsion decisions. The student or parent must submit a written request to the superintendent

within seven days after receipt of the written decision. The superintendent must provide the student or parent written notice of the date, time, and place of the meeting at which the Board will review the decision.

The Board shall review the record of the expulsion hearing in a closed meeting unless the parent requests in writing that the matter be held in an open meeting. The Board may also hear a statement from the student or parent and from the Board's designee.

The Board shall hear statements made by the parties at the review and will base its decision on evidence reflected in the record and any statements made by the parties at the review. The Board shall make and communicate its decision orally at the conclusion of the presentation. Consequences shall not be deferred pending the outcome of the hearing.

Expulsion Order

After the due process hearing, if the student is expelled, the Board or its designee shall deliver to the student and the student's parent a copy of the order expelling the student.

Not later than the second business day after the hearing, the campus principal shall deliver to the juvenile court a copy of the expulsion order and the information required by Section 52.04 of the Family Code.

If the length of the expulsion is inconsistent with the guidelines included in the Student Code of Conduct, the expulsion order shall give notice of the inconsistency.

Length of Expulsion

The length of an expulsion shall be correlated to the seriousness of the offense, the student's age and grade level, the frequency of misbehavior, the student's attitude, and statutory requirements.

The duration of a student's expulsion shall be determined on a case-by-case basis. The maximum period of expulsion is one calendar year except as provided below.

An expulsion may not exceed one year unless, after review, the district determines that:

1. The student is a threat to the safety of other students or to district employees, or
2. Extended expulsion is in the best interest of the student.

State and federal law require a student to be expelled from the regular classroom for a period of at least one calendar year for bringing a firearm, as defined by federal law, to school. However, the superintendent may modify the length of the expulsion on a case-by-case basis.

Students who commit offenses that require expulsion at the end of one school year may be expelled into the next school year to complete the term of expulsion.

Withdrawal during Process

When a student has violated the district's Code in a way that requires or permits expulsion from the district and the student withdraws from the district before the expulsion hearing takes place, the district may conduct the hearing after sending written notice to the parent and student.

If the student then reenrolls in the district during the same or subsequent school year, the district may enforce the expulsion order at that time, less any expulsion period that has been served by the student during enrollment in another district.

If the appropriate administrator or the Board fails to issue an expulsion order after the student withdraws, the next district in which the student enrolls may complete the proceedings.

Additional Misconduct

If during the expulsion, the student engages in additional conduct for which placement in a DAEP or expulsion is required or permitted, additional proceedings may be conducted, and the appropriate administrator or the Board may issue an additional disciplinary order as a result of those proceedings.

Restrictions during Expulsion

Expelled students are prohibited from being on school grounds or attending school-sponsored or

school-related activities during the period of expulsion.

No district academic credit shall be earned for work missed during the period of expulsion unless the student is enrolled in a JJAEP or another district-approved program.

Newly Enrolled Students

The district shall continue the expulsion of any newly enrolled student expelled from another district or an open-enrollment charter school until the period of the expulsion is completed.

If a student expelled in another state enrolls in the district, the district may continue the expulsion under the terms of the expulsion order, may place the student in a DAEP for the period specified in the order, or may allow the student to attend regular classes if:

1. The out-of-state district provides the district with a copy of the expulsion order, and
2. The offense resulting in the expulsion is also an expellable offense in the district in which the student is enrolling.

If a student is expelled by a district in another state for a period that exceeds one year and the district continues the expulsion or places the student in a DAEP, the district shall reduce the period of the expulsion or DAEP placement so that the entire period does not exceed one year, unless after a review it is determined that:

1. The student is a threat to the safety of other students or district employees, or
2. Extended placement is in the best interest of the student.

Emergency Expulsion Procedures

When an emergency expulsion occurs, the student shall be given verbal notice of the reason for the action. Within ten days after the date of the emergency expulsion, the student shall be given appropriate due process required for a student facing expulsion.

DAEP Placement of Expelled Students

The district may provide educational services to any expelled student in a DAEP; however, educational services in the DAEP must be provided if the student is less than ten years of age.

Students with Disabilities

The discipline of students with disabilities is subject to applicable state and federal law in addition to the Student Code of Conduct. To the extent any conflict exists, state and/or federal law shall prevail.

In accordance with the Education Code, a student who is enrolled in a special education program may not be disciplined for conduct meeting the definition of bullying, harassment, or making hit lists (see glossary) until an ARD committee meeting has been held to review the conduct.

In deciding whether to order suspension, DAEP placement, or expulsion, regardless of whether the action is mandatory or discretionary, the district shall take into consideration a disability that substantially impairs the student's capacity to appreciate the wrongfulness of the student's conduct.

A student with disabilities being served in special education may be expelled for engaging in conduct that would warrant such action for a student without disabilities only if the ARD committee determines the misconduct is not related to the disability or inappropriate placement.

In determining whether a student's disruptive behavior was related to the student's disability, the ARD committee shall base its decision on currently effective evaluation and assessment data and on review of the current IEP documentation rather than on established eligibility or previous committee decisions. The ARD committee shall consider whether the student's behavior indicates the need for new assessment or evaluation data. Unless the parents agree otherwise, the student must be returned to his or her current placement after ten

days while additional assessments are being conducted.

The ARD committee shall determine the instructional and related services to be provided during the time of expulsion. The student's IEP shall include goals and objectives designed to assist in returning the student to school and preventing significant regression.

If the ARD committee determines that the student's disruptive behavior is related to the disability or inappropriate placement, the student shall not be removed from the instructional setting. If the disruptive behavior on the part of the student indicates an inappropriate placement, the ARD committee shall review the placement and recommend alternatives. If the ARD committee determines that the behavior was related to the disability, it shall revise the IEP to address the student's behavior and educational need. Emergency placement not to exceed 10 consecutive school days may be considered by the ARD committee while it reviews the student's IEP and educational needs. For a student not previously identified by the District as a student potentially in need of special education, a parental request for an evaluation or due process hearing after a disciplinary removal has commenced does not obligate the District to return the student to the prediscipline placement. The educational placement that will be subject to the "stay-put" provision will be the disciplinary placement, which shall continue until either the resolution of due process proceedings, completion and consideration of evaluation data by the ARD committee, or expiration of the disciplinary sanction term, whichever may apply.

A student with a disability who has brought a firearm to school may be placed in an interim alternative educational setting for up to 45 calendar days by an ARD meeting. However, if the student's parents initiate a due process hearing and if the parties cannot agree on another placement, the student must remain in that interim placement during the authorized review proceedings. In this situation, the student could remain in the interim alternative education setting for more than 45 calendar days. (For more information consult Special Education

Operating Guidelines available through the Special Education Department.)

Glossary

The glossary provides legal definitions and locally established definitions and is intended to assist in understanding terms related to the Student Code of Conduct.

Abuse is improper or excessive use.

Aggravated robbery is defined in part by Texas Penal Code 29.03(a) when a person commits robbery and:

1. Causes serious bodily injury to another;
2. Uses or exhibits a deadly weapon; or
3. Causes bodily injury to another person or threatens or places another person in fear of imminent bodily injury or death, if the other person is:
 - a. 65 years of age or older, or
 - b. A disabled person.

Armor-piercing ammunition is handgun ammunition used in pistols and revolvers and designed primarily for the purpose of penetrating metal or body armor.

Arson is:

1. A crime that involves starting a fire or causing an explosion with intent to destroy or damage:
 - a. Any vegetation, fence, or structure on open-space land; or
 - b. Any building, habitation, or vehicle:
 - 1) Knowing that it is within the limits of an incorporated city or town,

- 2) Knowing that it is insured against damage or destruction,
- 3) Knowing that it is subject to a mortgage or other security interest,
- 4) Knowing that it is located on property belonging to another,
- 5) Knowing that it has located within it property belonging to another, or
- 6) When the person starting the fire is reckless about whether the burning or explosion will endanger the life of some individual or the safety of the property of another.

2. A crime that involves recklessly starting a fire or causing an explosion while manufacturing or attempting to manufacture a controlled substance and the fire or explosion damages any building, habitation, or vehicle; or
3. A crime that involves intentionally starting a fire or causing an explosion and in so doing:
 - a. Recklessly damages or destroys a building belonging to another, or
 - b. Recklessly causes another person to suffer bodily injury or death.

Assault is defined in part by Texas Penal Code §22.01(a)(1) as intentionally, knowingly, or recklessly causing bodily injury to another; §22.01(a)(2) as intentionally or knowingly threatening another with imminent bodily injury; and §22.01(a)(3) as intentionally or knowingly causing physical contact with another that can reasonably be regarded as offensive or provocative.

Bullying is when a student or group of students engages in written or verbal expression, expression through electronic means, or physical conduct that occurs on school property, at a school-sponsored or school-related activity, or in a vehicle operated by the district and a school district's Board or the Board's designee determines that the behavior:

1. Has the effect or will have the effect of physically harming a student, damaging a student's property, or placing a student in reasonable fear of harm to the student's person or of damage to the student's property; or
2. Is sufficiently severe, persistent, and pervasive enough that the action or threat creates an intimidating, threatening, or abusive educational environment for a student.

This conduct is considered bullying if it:

1. Exploits an imbalance of power between the student perpetrator who is engaging in bullying and the student victim through written or verbal expression or physical conduct; and

2. Interferes with a student's education or substantially disrupts the operation of a school.

Chemical dispensing device is a device designed, made, or adapted for the purpose of causing an adverse psychological or physiological effect on a human being. A small chemical dispenser sold commercially for personal protection is not in this category.

Club is an instrument specially designed, made, or adapted for the purpose of inflicting serious bodily injury or death. A blackjack, mace, and tomahawk are in the same category.

Criminal street gang is three or more persons having a common identifying sign or symbol or an identifiable leadership who continuously or regularly associate in the commission of criminal activities.

Cyberbullying is the use of any electronic communication device to engage in bullying or intimidation.

Dating violence occurs when a person in a current or past dating relationship uses physical, sexual, verbal, or emotional abuse to harm, threaten, intimidate, or control another person in the relationship. Dating violence also occurs when a person commits these acts against a person in a marriage or dating relationship with the individual who is or was once in a marriage or dating relationship with the person committing the offense, as defined by Section 71.0021 of the Family Code.

Deadly conduct occurs when a person recklessly engages in conduct that places another in imminent danger of serious bodily injury, such as knowingly discharging a firearm in the

direction of an individual, habitation, building, or vehicle.

Deferred adjudication is an alternative to seeking a conviction in court that may be offered to a juvenile for delinquent conduct or conduct indicating a need for supervision.

Deferred prosecution may be offered to a juvenile as an alternative to seeking a conviction in court for delinquent conduct or conduct indicating a need for supervision.

Delinquent conduct is conduct that violates either state or federal law and is punishable by imprisonment or confinement in jail. It includes conduct that violates certain juvenile court orders, including probation orders, but does not include violations of traffic laws.

Discretionary means that something is left to or regulated by a local decision maker.

Explosive weapon is any explosive or incendiary bomb, grenade, rocket, or mine and its delivery mechanism that is designed, made, or adapted for the purpose of inflicting serious bodily injury, death, or substantial property damage, or for the principal purpose of causing such a loud report as to cause undue public alarm or terror.

False Alarm or Report occurs when a person knowingly initiates, communicates, or circulates a report of a present, past, or future bombing, fire, offense, or other emergency that he or she knows is false or baseless and that would ordinarily:

1. Cause action by an official or volunteer agency

organized to deal with emergencies;

2. Place a person in fear of imminent serious bodily injury; or
3. Prevent or interrupt the occupation of a building, room, or place of assembly.

Firearm silencer means any device designed, made, or adapted to muffle the report of a firearm.

Graffiti are markings with paint, an indelible pen or marker, or an etching or engraving device on tangible property without the effective consent of the owner. The markings may include inscriptions, slogans, drawings, or paintings.

Harassment is:

1. Conduct that meets the definition established in district policies DIA(LOCAL) and FFH(LOCAL); or
2. Conduct that threatens to cause harm or bodily injury to another student, is sexually intimidating, causes physical damage to the property of another student, subjects another student to physical confinement or restraint, or maliciously and substantially harms another student's physical or emotional health or safety.

Hazing is an intentional or reckless act, on or off campus, by one person alone or acting with others, that endangers the mental or physical health or safety of a student for the purpose of pledging, initiation into, affiliation with, holding office in, or maintaining membership in an organization.

Hit list is a list of people targeted to be harmed, using a firearm, a knife, or any other object to be used with intent to cause bodily harm.

Knuckles are any instrument consisting of finger rings or guards made of a hard substance and designed or adapted for inflicting serious bodily injury or death by striking a person with a fist enclosed in the knuckles.

Machine gun is any firearm that is capable of shooting more than two shots automatically, without manual reloading, by a single function of the trigger.

Mandatory means that something is obligatory or required because of an authority.

Paraphernalia are devices that can be used for inhaling, ingesting, injecting, or otherwise introducing a controlled substance into a human body.

Possession means to have an item on one's person or in one's personal property, including but not limited to clothing, purse, or backpack; a private vehicle used for transportation to or from school or school-related activities, including but not limited to an automobile, truck, motorcycle, or bicycle; telecommunications or electronic devices; or any other school property used by the student, including but not limited to a locker or desk.

Public school fraternity, sorority, secret society, or gang means an organization composed wholly or in part of students that seeks to perpetuate itself by taking additional members from the students enrolled in school based on a decision of its membership rather than on the free choice of a qualified student. Educational organizations listed in Section

37.121(d) of the Education Code are excepted from this definition.

Reasonable belief is a determination made by the superintendent or designee using all available information, including the information furnished under Article 15.27 of the Code of Criminal Procedure.

Self-defense is the use of force against another to the degree a person reasonably believes the force is immediately necessary to protect himself or herself.

Serious misbehavior means:

1. Deliberate violent behavior that poses a direct threat to the health or safety of others;
2. Extortion, meaning the gaining of money or other property by force or threat;
3. Conduct that constitutes coercion, as defined by Section 1.07, Penal Code; or
4. Conduct that constitutes the offense of:
 - a. Public lewdness under Section 21.07, Penal Code;
 - b. Indecent exposure under Section 21.08; Penal Code;
 - c. Criminal mischief under Section 28.03, Penal Code;
 - d. Personal hazing under Section 37.152; or
 - e. Harassment under Section 42.07(a)(1), Penal Code, of a student or district employee.

Serious or persistent misbehavior includes but is not limited to:

- Behavior that is grounds for permissible expulsion or mandatory DAEP placement.
- Behavior identified by the district as grounds for discretionary DAEP placement.
- Actions or demonstrations that substantially disrupt or materially interfere with school activities.
- Refusal to attempt or complete school work as assigned.
- Insubordination.
- Profanity, vulgar language, or obscene gestures.
- Leaving school grounds without permission.
- Falsification of records, passes, or other school-related documents.
- Refusal to accept discipline assigned by the teacher or principal.

Short-barrel firearm is a rifle with a barrel length of less than 16 inches or a shotgun with a barrel length of less than 18 inches, or any weapon made from a rifle or shotgun that, as altered, has an overall length of less than 26 inches.

Terroristic threat is a threat of violence to any person or property with intent to:

1. Cause a reaction of any type by an official or volunteer agency organized to deal with emergencies;
2. Place any person in fear of imminent serious bodily injury;
3. Prevent or interrupt the occupation or use of a building; room, place of assembly, or place to which the public has access; place

of employment or occupation; aircraft, automobile, or other form of conveyance; or other public place;

4. Cause impairment or interruption of public communications, public transportation, public water, gas, or power supply or other public service;
5. Place the public or a substantial group of the public in fear of serious bodily injury; or
6. Influence the conduct or activities of a branch or agency of the federal government, the state, or a political subdivision of the state (including the district).

Tire deflation device is defined in part by Section 46.01 of the

Penal Code as a device, including a caltrop or spike strip, that, when driven over, impedes or stops the movement of a wheeled vehicle by puncturing one or more of the vehicle's tires.

Title 5 offenses are those that involve injury to a person and include murder; kidnapping; assault; aggravated assault; sexual assault; aggravated sexual assault; unlawful restraint; indecency with a child; injury to a child, an elderly person, or a disabled person; abandoning or endangering a child; deadly conduct; terroristic threat; aiding a person to commit suicide; and tampering with a consumer product. [See FOC(EXHIBIT)]

Under the influence means lacking the normal use of mental

or physical faculties.

Impairment of a person's physical or mental faculties may be evidenced by a pattern of abnormal or erratic behavior, the presence of physical symptoms of drug or alcohol use, or by admission. A student "under the influence" need not be legally intoxicated to trigger disciplinary action.

Use means voluntarily introducing into one's body, by any means, a prohibited substance.

Zip gun is a device or combination of devices, not originally a firearm, but adapted to expel a projectile through a smooth-bore or rifled-bore barrel by using the energy generated by an explosion or burning substance.